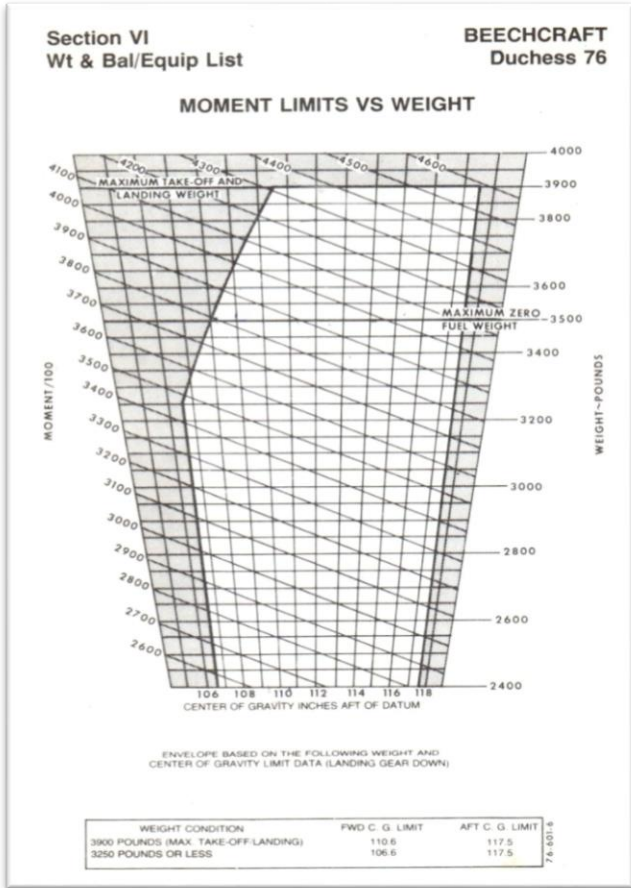




## WEIGHT & BALANCE - BE-76 - N6002K



**CENTER OF GRAVITY**

$$C.G. = \frac{\text{Total Moment}}{\text{Total Weight}}$$

**DEPARTURE AIRPORT**

Takeoff Distance \_\_\_\_\_

Landing Distance \_\_\_\_\_

Runway Length \_\_\_\_\_

**ARRIVAL AIRPORT**

Takeoff Distance \_\_\_\_\_

Landing Distance \_\_\_\_\_

Runway Length \_\_\_\_\_

	WEIGHT	ARM	MOMENT
Empty Weight	2581.06 lbs.	108.66	280,468.35
Fuel		117.00	
Pilot/Passenger (Front)		105.00 – 112.00	
Passengers (Rear)		142.00	
Baggage Area		167.00	
Takeoff Weight			
Less Fuel Burned			
Landing Weight			

*It is the responsibility of PIC TO verify the current weight and balance record of the aircraft from POH.*